

Addendum No. 2 to IFB 14-71



CITY OF SOMERVILLE, MASSACHUSETTS
Department of Purchasing
JOSEPH A. CURTATONE
MAYOR

To: All Parties on Record with the City of Somerville as Holding IFB 14-71,
Repairs to Somerville High School Auditorium, Kitchen and Cafeteria.

From: Angela M. Allen, Purchasing Director

Date: March 24, 2014

Re: Revisions to Drawings, Sub Bid Results

Addendum No. 2 to IFB 14-71

Please acknowledge receipt of this Addendum by signing below and including this form in your proposal package. Failure to do so may subject the proposer to disqualification.

X

Name of Authorized Signatory

Title of Authorized Signatory

ADDENDUM NO.2

March 24, 2014

Notice to All Bidders

The attention of Bidders submitting proposals for the Somerville High School Renovations to the Auditorium, Kitchen and Cafeteria as indicated above is called to the following Addendum to the Plans. The revisions set forth herein, whether of omission, addition or substitution, are to be included in and form a part of the Proposal Submitted.

The number of this Addendum must be entered in the space provided on the Bid Form

Filed Sub-Bid results see attachment A.

Changes to the Drawings

A. Drawing AD103 AUDITORIUM BALCONY DEMO FLOOR PLAN

1. AUDITORIUM BALCONY 340, change balcony corner to dashed lines to designate that they are to be demolished.

B. Drawings AD104 CAFETERIA/KITCHEN DEMO RCP

1. OFFICE 129B, OFFICE 12C, NON-FOOD STORAGE 129D, DRY FOOD STORAGE 129E, STAFF LOCKER 129H and TOILET 129J, add note 10.6

“REMOVE GYPSUM/PLASTER CEILING, METAL LATHE, FURRING AND RELATED ATTACHMENTS.”

C. Drawing AD105 AUDITORIUM DEMO RCP

1. MECHANICAL 340A AND MECHANICAL 340B, add note after Demo RCP Work Note 23.1, “ENLARGE OPENING.”

D. Drawing A101 CAFETERIA/KITCHEN FLOOR PLAN

1. TYP. INTERIOR PARTITION TYPES, Wall type 1H, after “7/8” MTL ‘HAT’ CHANNELS,” add “ON EXISTING MASONRY WALLS.”

E. Drawing A102 AUDITORIUM FLOOR PLAN

1. AUDITORIUM 230, add 1H wall designation to walls in STAIR #7 and STAIR #8.

F. Drawing A103 AUDITORIUM BALCONY FLOOR PLAN

1. MECHANICAL 340A AND MECHANICAL 340B, Revise enlarged plan detail callout from "1/A513" to "1/A512."
2. AUDITORIUM BALCONY 340, add balcony rail dimensioning to call out equal spacing for glass rails and glass rail posts. Refer to the revised drawing attached.

G. Drawings A122 AUDITORIUM RCP

1. AUDITORIUM 230, at balcony corners add detail callout to reference 6/A401.

H. Drawing A401 STAIR AND RAILING DETAILS

1. DETAIL 1 GUARDRAIL AT BALCONY PARAPET, remove reveal and extend existing wall up to Wood Parapet Cap. The inside wall of the balcony is existing to remain.
2. DETAIL 6 BALCONY PARAPET INSIDE CORNER, revised detail, refer to revised drawing attached.
3. DETAIL 13 HAND RAIL ELEVATION AT STAGE LEFT, remove two wall mounted handrail brackets, only three are required.
4. Add DETAIL 14, BALCONY PARAPET INSIDE CORNER SECTION, refer to revised drawing attached.

I. Drawing A511 INTERIOR DETAILS

1. DETAIL 1 CEILING COVE DETAIL AT WALL, remove 7/8" HAT CHANNEL and note.
2. DETAIL 2 CEILING HEIGHT TRANSITION DETAIL, remove 7/8" HAT CHANNEL and note.
3. DETAIL 3 PROSCENIUM/CEILING SECTION, remove 7/8" HAT CHANNEL and note.
4. DETAIL 11 FRONT STAGE SOFFIT DETAIL, before both (2) "CROWN MOLDING" notes and "12"H x 6"D."
5. DETAIL 12 MECHANICAL ROOM LOUVER

Add "PT" before "WOOD BLOCKING."

Revise detail to include flashing and drip edge, refer to revised drawings attached.

J. Drawing A602 FINISH SCHEDULE AND OPENINGS

1. ROOM FINISH SCHEDULE:

Room 230, change the ceiling finish from "PT" to "ACT/FF."

Repairs to Somerville High School
Auditorium, Kitchen and Cafeteria
Somerville, Massachusetts

Room 340, change the north wall from “-“ to “PT.”
Room 340A, change ceiling finish from “PT” to “PT/GWB”

2. INTERIOR FINISH NOTES, item 13, remove “AND THEIR SUBCONTRACTORS ARE.”

K. Drawing A630 CAFETERIA/KITCHEN FLOOR FINISH PLAN

1. Add PAINTED CONCRETE hatch to OFFICE 129B, OFFICE 12C, NON-FOOD STORAGE 129D, DRY FOOD STORAGE 129E, STAFF LOCKER 129H and TOILET 129J.
2. Remove note that reads “HIGH AND LOW REFER TO EXISTING PHOTO NO. 1” and remove photo No. 1

Attachments

- A. Sub-Bid Results
- B. Drawings: A103, A401, A511

END OF ADDENDUM NO.2

Repairs to Auditoroium, Kitchen and Cafeteria
Date: 03/21/2014

Bidder	Sum	Form OK	Addenda 1 & 2	Bid Deposit	Exceptions	Restricted to	Alternate	Remarks
			NO BIDDERS					
	GENERAL BIDDERS ARE INSTRUCTED TO CARRY \$30,000.00 FOR THIS TRADE.							

Repairs to Auditoroium, Kitchen and Cafeteria
Date: 03/21/2014

[illegible]

Repairs to Auditoroium, Kitchen and Cafeteria
Date: 03/21/2014

Bidder	Sum	Form OK	Addenda 1 & 2	Bid Deposit	Exceptions	Restricted to	Alternate	Remarks
			NO BIDDERS					
	GENERAL BIDDERS ARE INSTRUCTED TO CARRY \$35,000.00 FOR THIS TRADE.							

Repairs to Auditoroium, Kitchen and Cafeteria
Date: 03/21/2014

[illegible]

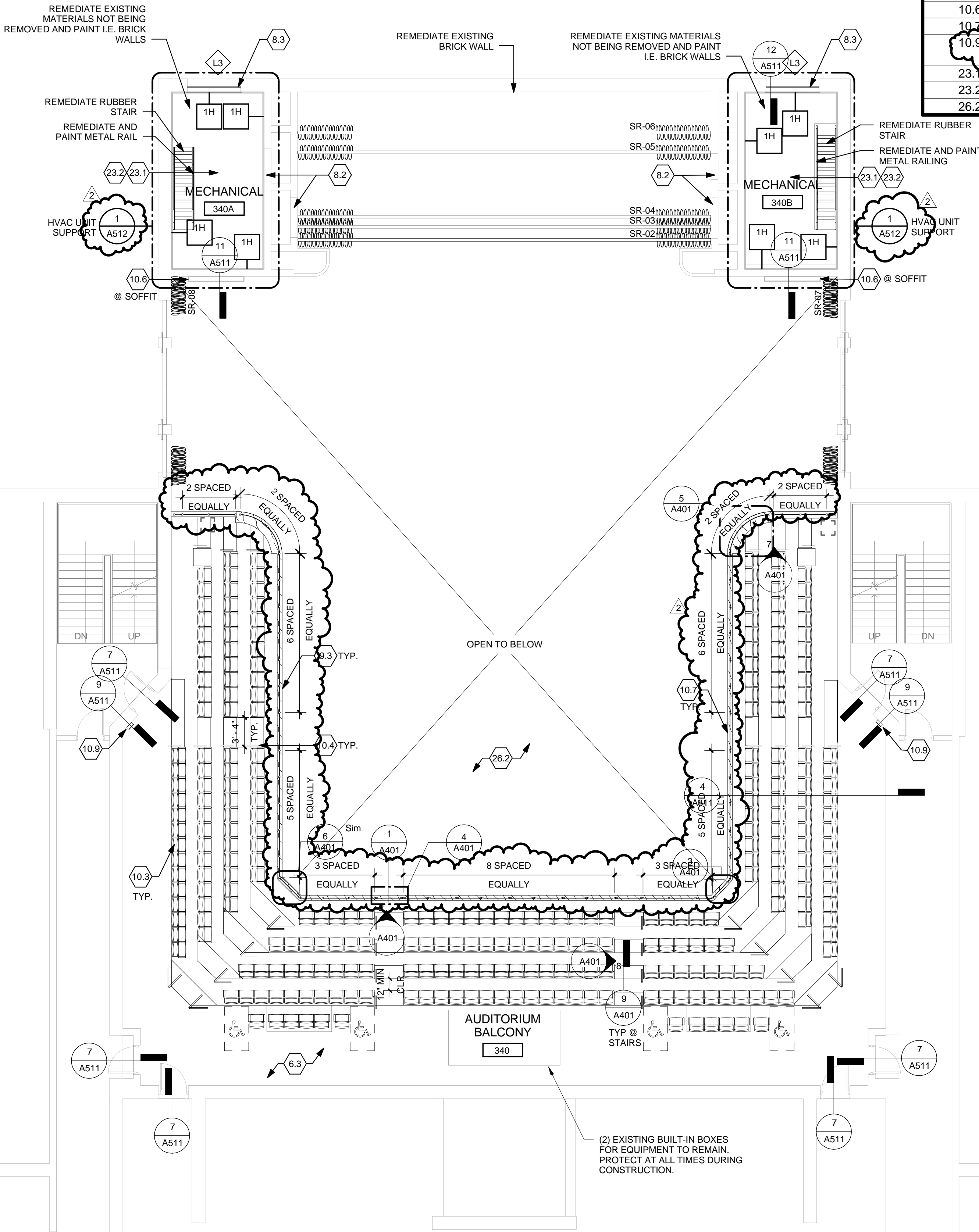
Repairs to Auditorium, Kitchen and Cafeteria
Date: 03/21/2014

[illegible]

Repairs to Auditoroium, Kitchen and Cafeteria
Date: 03/21/2014


[illegible]

Repairs to Auditoroium, Kitchen and Cafeteria
Date: 03/21/2014



AUDITORIUM BALCONY PLAN WORK NOTES	
WORK NOTE #	WORK NOTE
6.3	SAND, REFINISH, POLISH WOOD FLOOR AND INSTALL CARPET FLOORING, SEE DETAILS 5, 6, 7, 8/A511 AND SHEET A631 & A632 FOR LOCATIONS
8.2	REMOVE PORTION OF EXISTING GYP. FINISH AND STUD FRAMED WALL FINISH AS REQUIRED TO ACCOMMODATE WORK. PROVIDE INFILL AS REQUIRED (COORDINATE WITH MEP)
8.3	ENLARGE OPENING TO ACCOMMODATE NEW LOUVER. SEE DRAWING A512
9.3	INSTALL WOOD FINISH AND CARPET
10.3	SEATING WILL BE PROVIDED BY SEATING CONTRACTOR UNDER SEPARATE CONTRACTOR. GENERAL CONTRACTOR TO COORDINATE SEATING INSTALLATION
10.4	INSTALL STAINLESS STEEL HANDRAILS ALONG WALKS AT STAIRS, SEE DETAILS 7, 8, 9/A401
10.6	INSTALL AND BUILD OUT GYP WALL BOARD SOFFIT. SEE DETAIL 11/A511
10.7	INSTALL GUARDRAIL ON BALCONY PARAPET, SEE DETAILS 1, 2, 3, 4, 5/A401
10.9	MOUNT FIRE EXTINGUISHER, TO BE SEMI RECESSED IN AUDITORIUM AND WALL MOUNTED ON STAGE. SEE DETAIL 9/A511
23.1	INSTALL HVAC UNITS, WIRING AND CONTROLS (REFER TO MECHANICAL)
23.2	INSTALL PIPING INSULATION (REFER TO MECHANICAL)
26.2	INSTALL LOW VOLTAGE CAMERA DEVICES, WIRING AND CONTROLS (REFER TO ELECTRICAL)

GENERAL PLAN NOTES

1. COORDINATE ALL WORK WITH MECHANICAL AND ELECTRICAL DRAWINGS. NOTIFY ARCHITECT OF ANY DISCREPANCIES BEFORE PROCEEDING WITH WORK.
2. ALL DIMENSIONS TO ARE TO FACE OF STUD AND FACE OF MASONRY UNLESS NOTED OTHERWISE.
3. ALL DIMENSIONS TO EXISTING CONSTRUCTION ARE TO FACE OF FINISH UNLESS OTHERWISE NOTED.
4. PATCH (AS NECESSARY), SAND, PRIME AND PAINT ALL EXISTING DOORS AND FRAMES, WINDOWS, WINDOW TRIMS, GYPSUM BOARD SOFFITS, GYPSUM BOARD WALLS (BACK STAGE) AND PLASTER WALLS ABOVE WOOD PANELING.
5. REFER TO SPECIFICATION SECTION 024120 FOR REMEDIATION OF MATERIALS.
6. REMOVE ALL PIPING INSULATION AND REPLACE WITH NEW WITHIN SCOPE OF WORK.
7.  = SIGNIFIES AREAS THAT HAVE BEEN CUT TO EXPOSE EXISTING CONDITIONS TO BE PATCHED AND MATCHED TO ADJACENT SURFACES.

[illegible]

ISSUED FOR BID



Repairs to Somerville
High School
Auditorium, Kitchen
and Cafeteria

81 Highland Avenue,
Somerville, MA 02143

AUDITORIUM BALCONY FLOOR PLAN

PROJECT NUMBER: 19431.01

DESIGNED BY: FC

DRAWN BY: EKM

CHECKED BY: FC

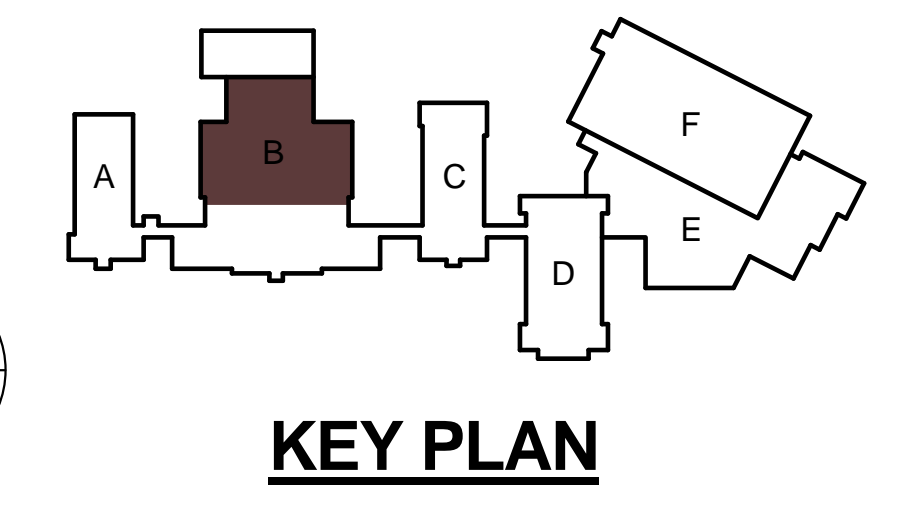
DATE: March 03, 2014

SCALE: As indicated

SHEET NUMBER:

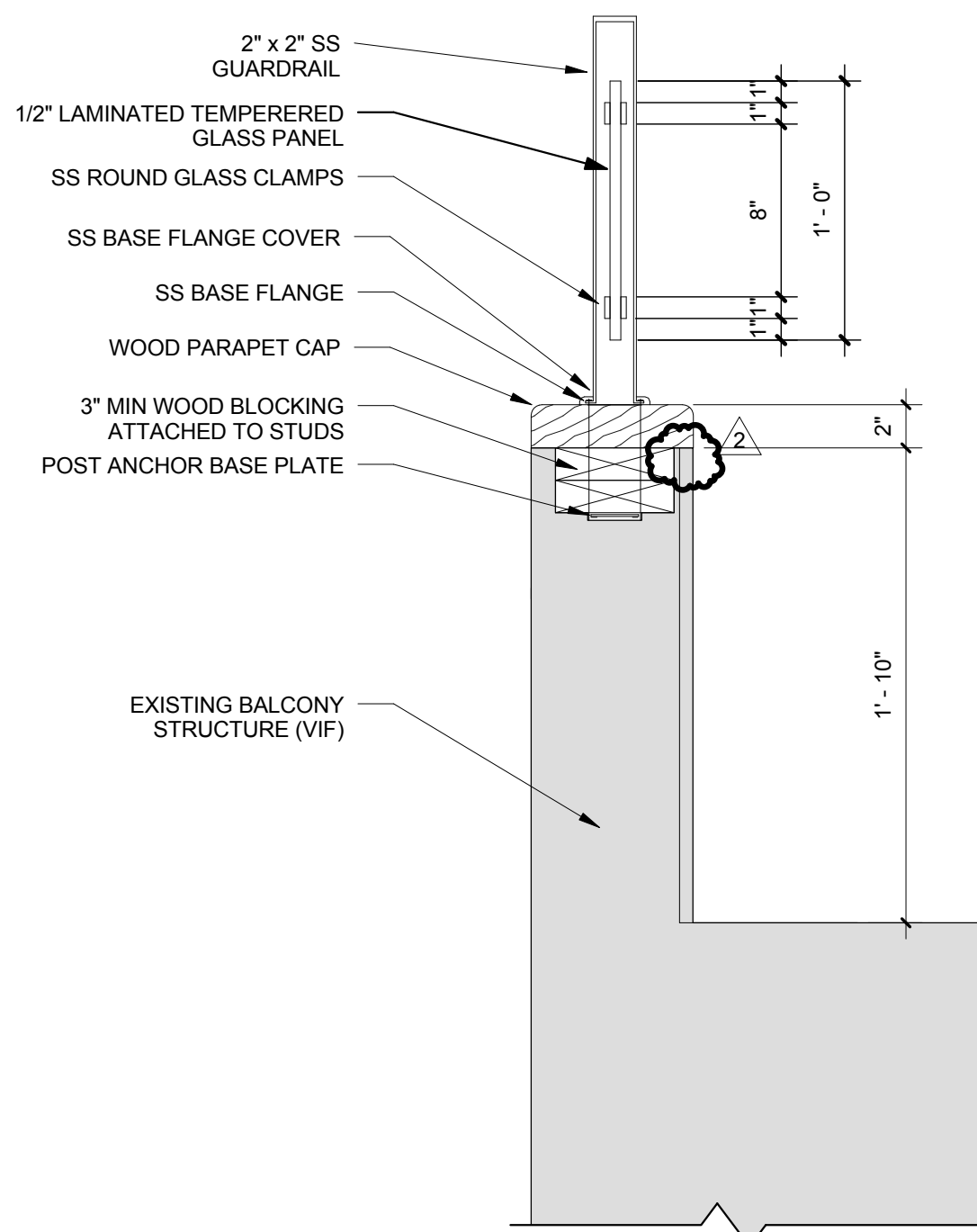
A103

SHEET 13 OF 61

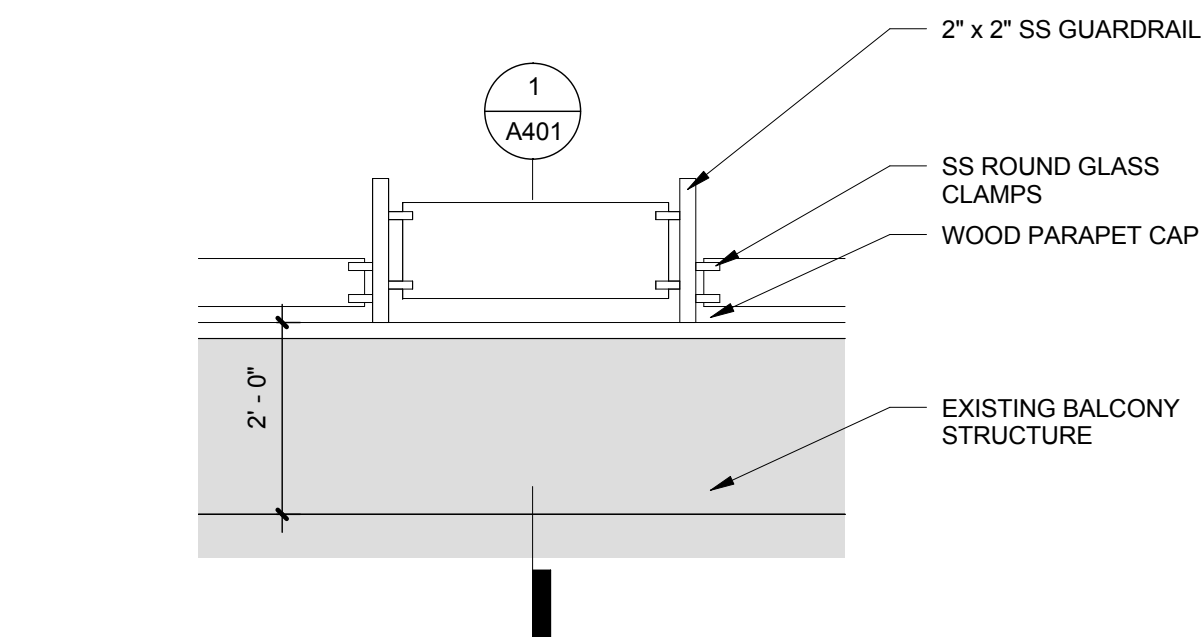


KEY PLAN

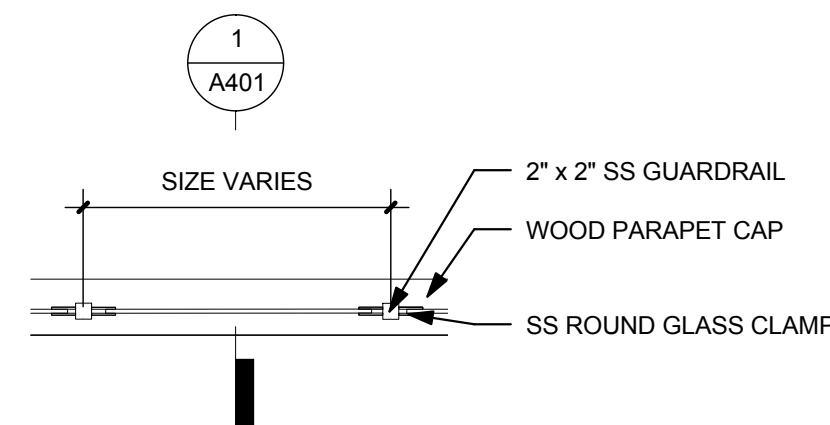
PROJECT FILE: C:\Users\A401\Documents\19431-Somerville HS Study Repair - Elevation
PLOTTED: 3/24/2014 10:33:16 AM
REVIEWED BY: CIVIL: ARCH: STRUC: PLUM: FIRE: MECH: ELEC:



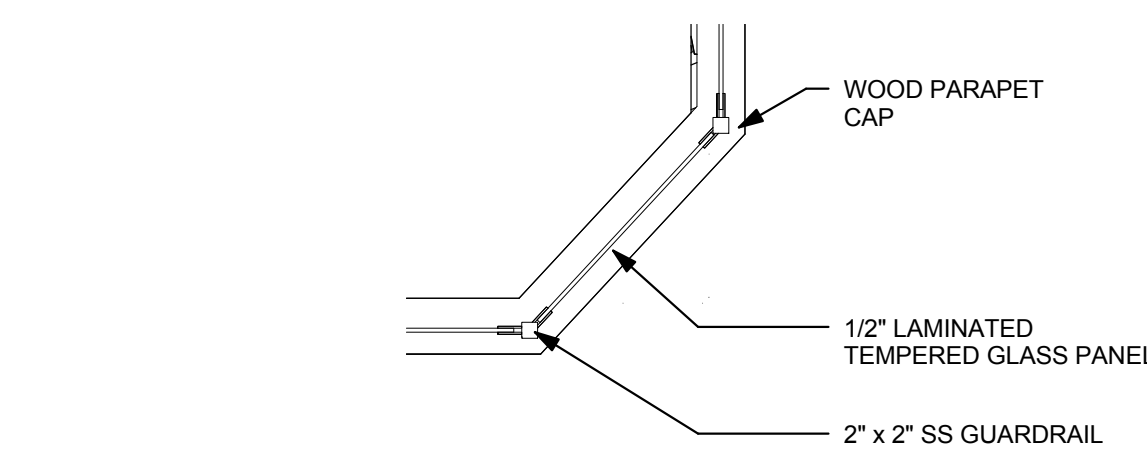
1 GUARDRAIL DETAIL AT BALCONY PARAPET
SCALE: 1 1/2" = 1'-0"



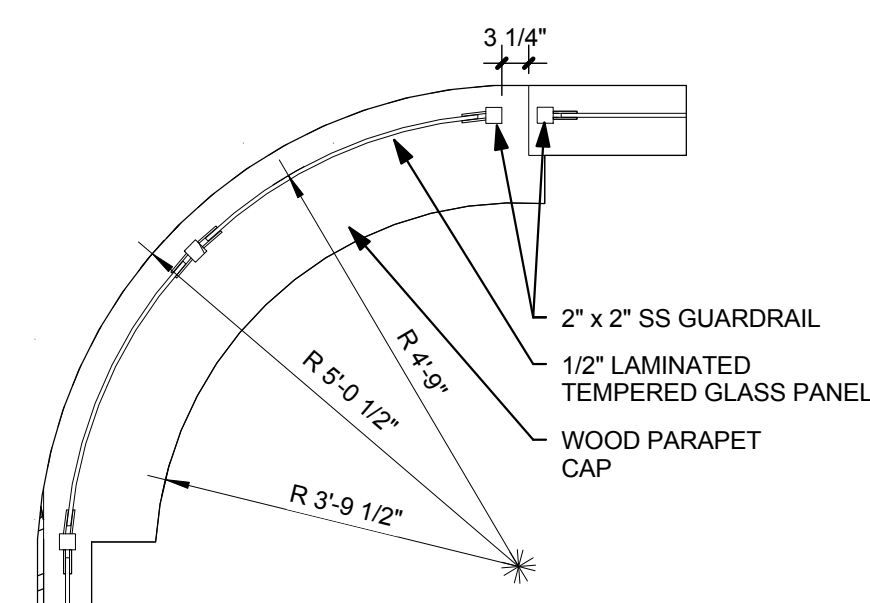
2 GUARDRAIL ELEVATION AT BALCONY END OF AISLE
SCALE: 1/2" = 1'-0"



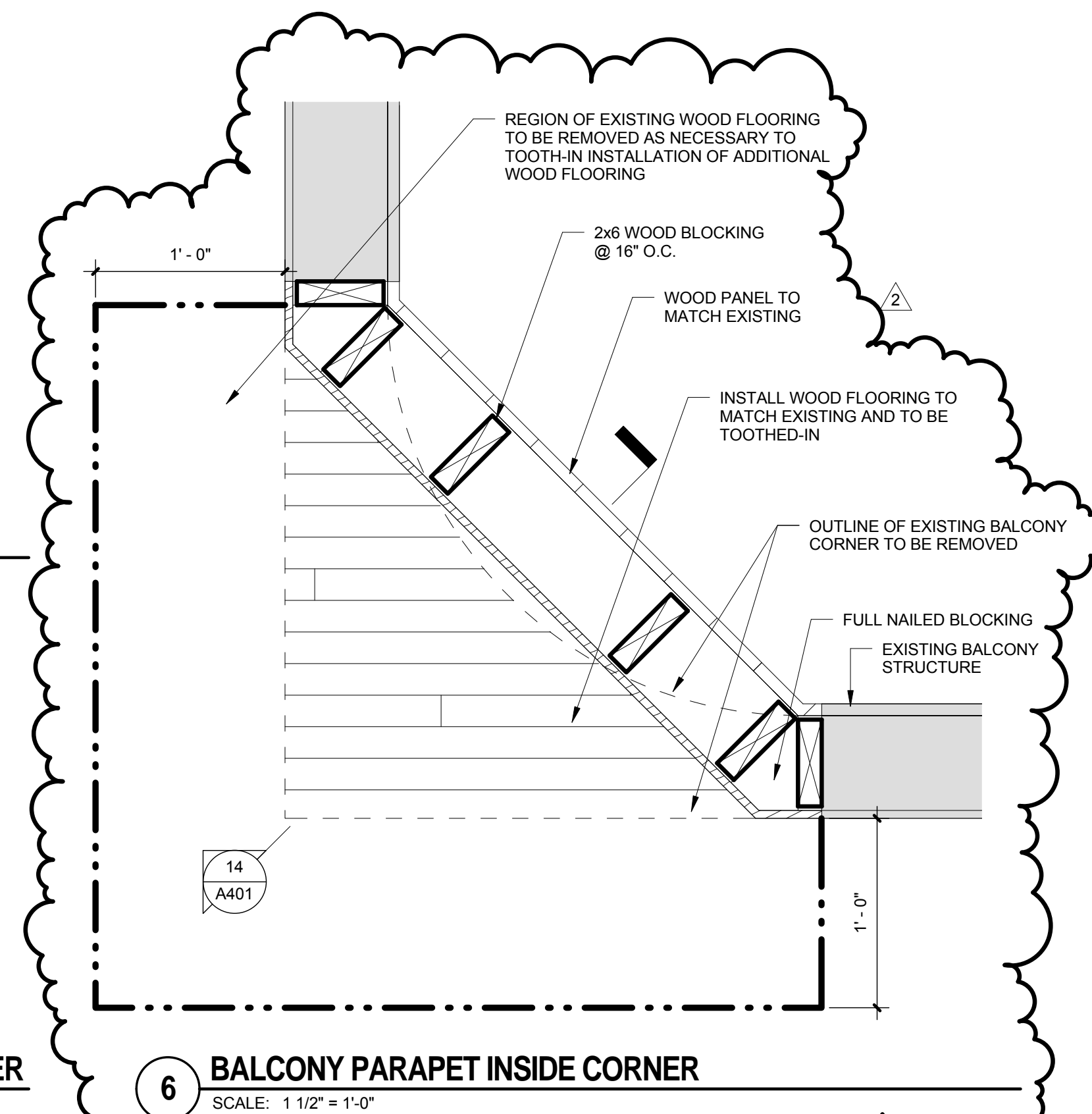
4 GUARDRAIL PLAN DETAIL AT BALCONY END OF AISLE
SCALE: 1/2" = 1'-0"



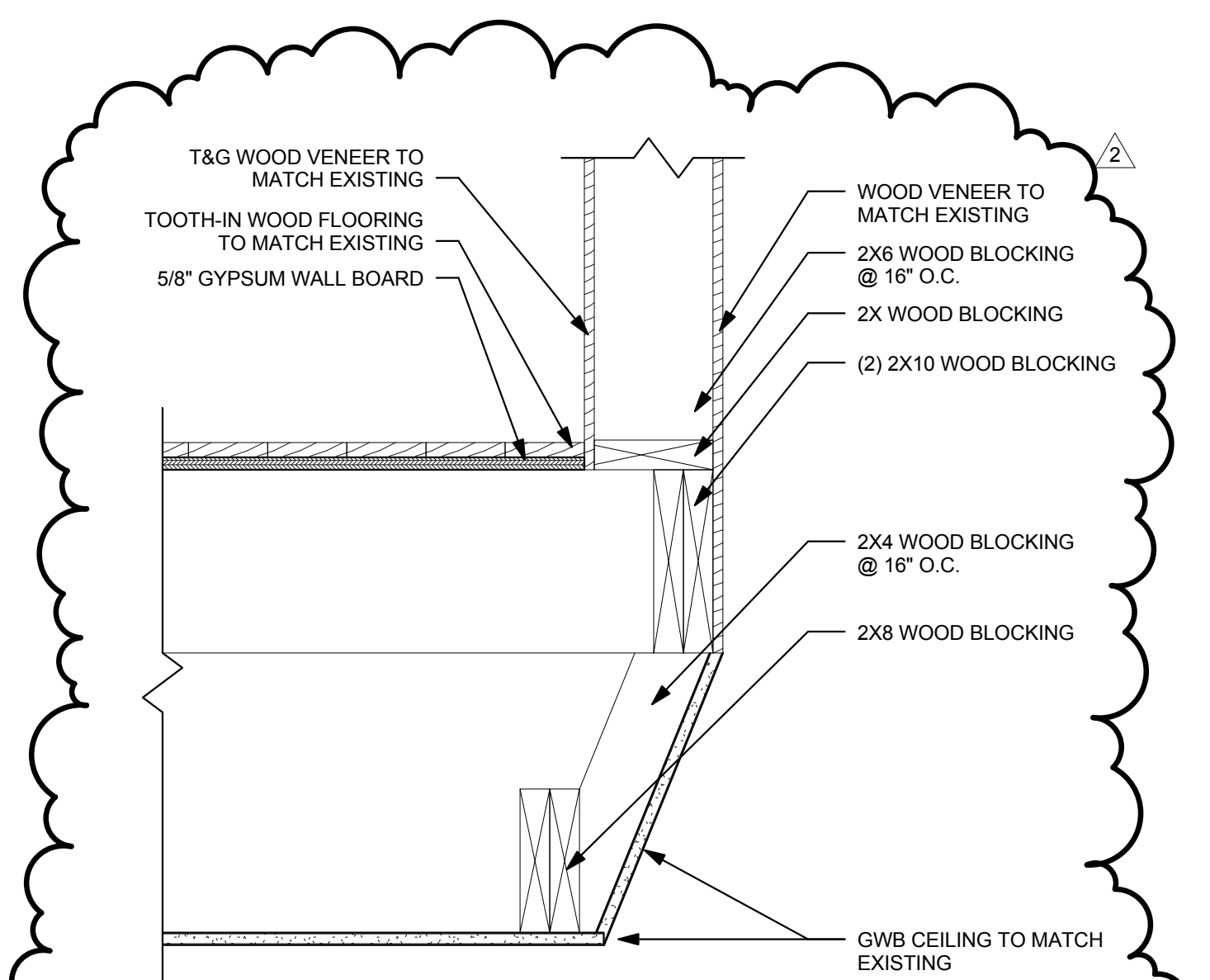
3 GUARDRAIL PLAN DETAIL AT BALCONY INSIDE CORNER
SCALE: 1/2" = 1'-0"



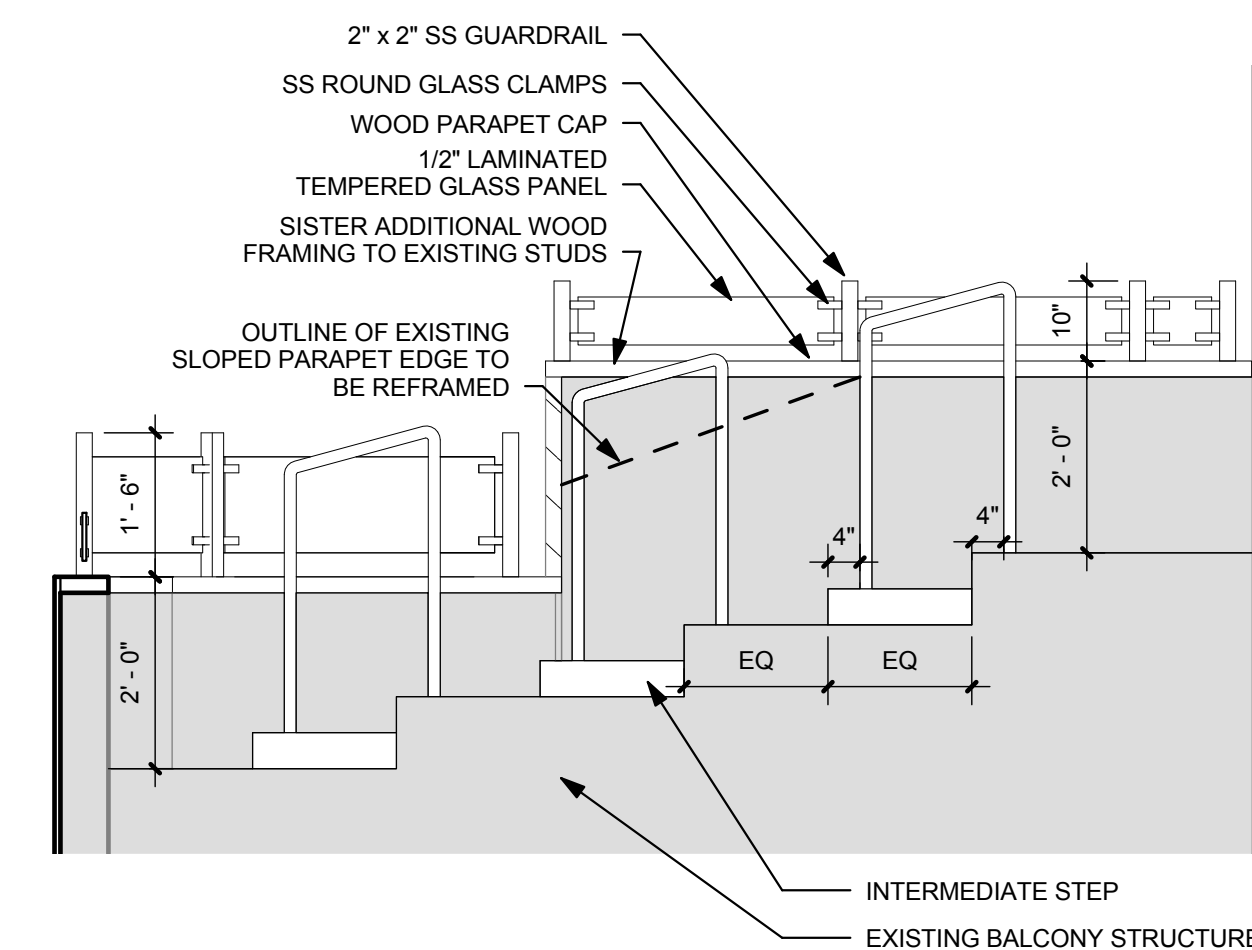
5 GUARDRAIL PLAN DETAIL AT BALCONY RADIUS CORNER
SCALE: 1/2" = 1'-0"



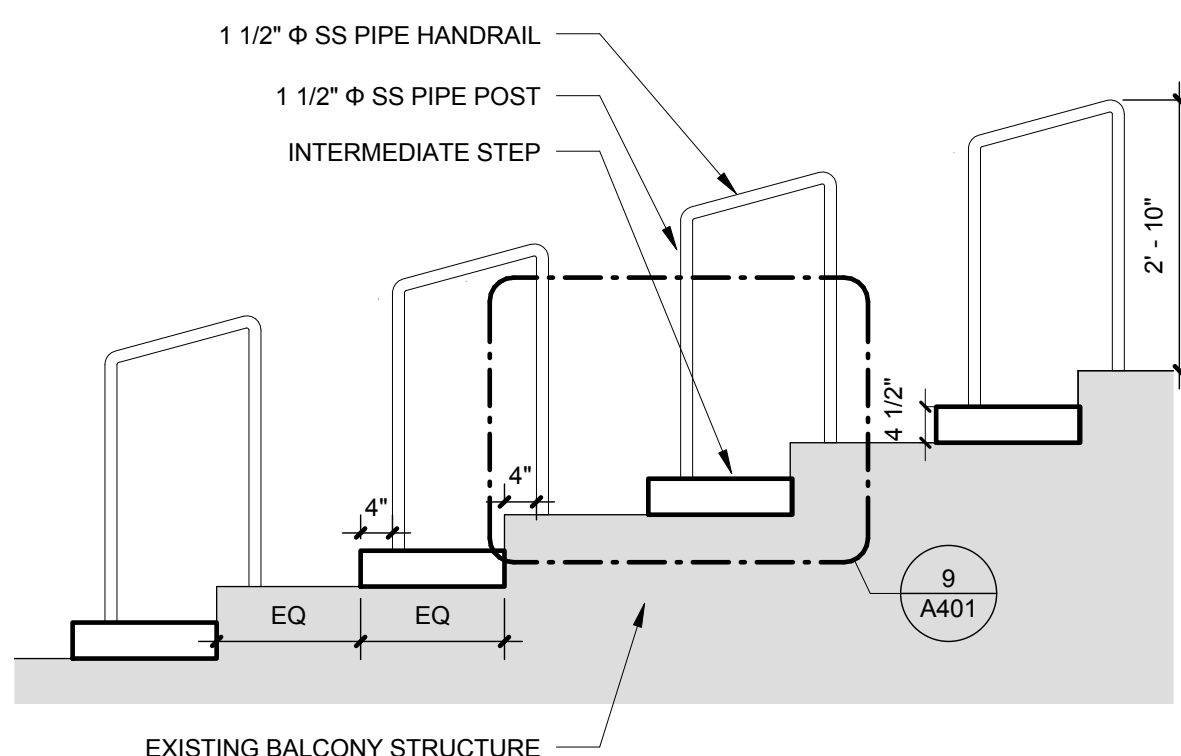
6 BALCONY PARAPET INSIDE CORNER
SCALE: 1 1/2" = 1'-0"



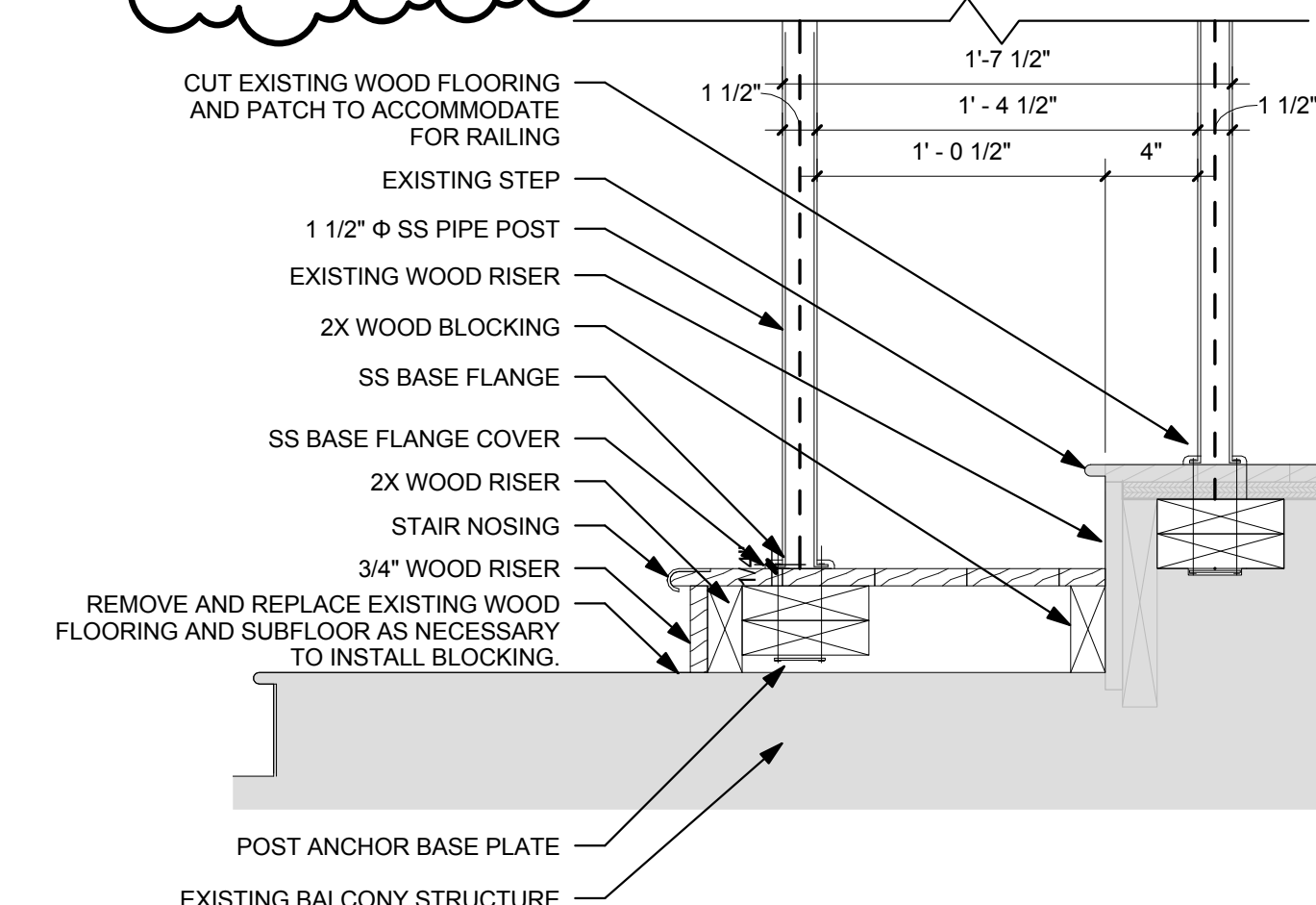
14 BALCONY PARAPET INSIDE CORNER SECTION
SCALE: 1 1/2" = 1'-0"



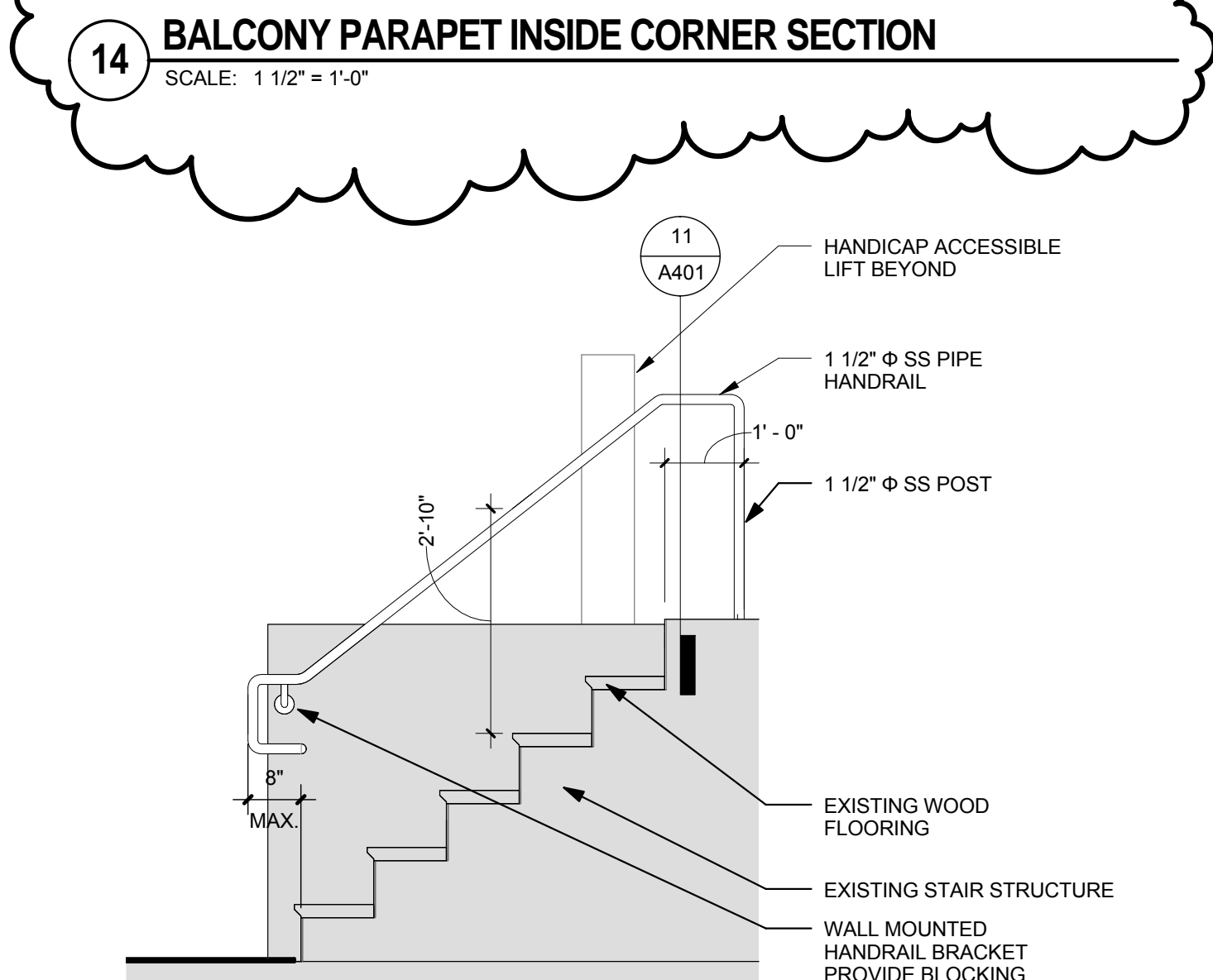
7 GUARDRAIL ELEVATION AT BALCONY CROSS AISLE
SCALE: 1/2" = 1'-0"



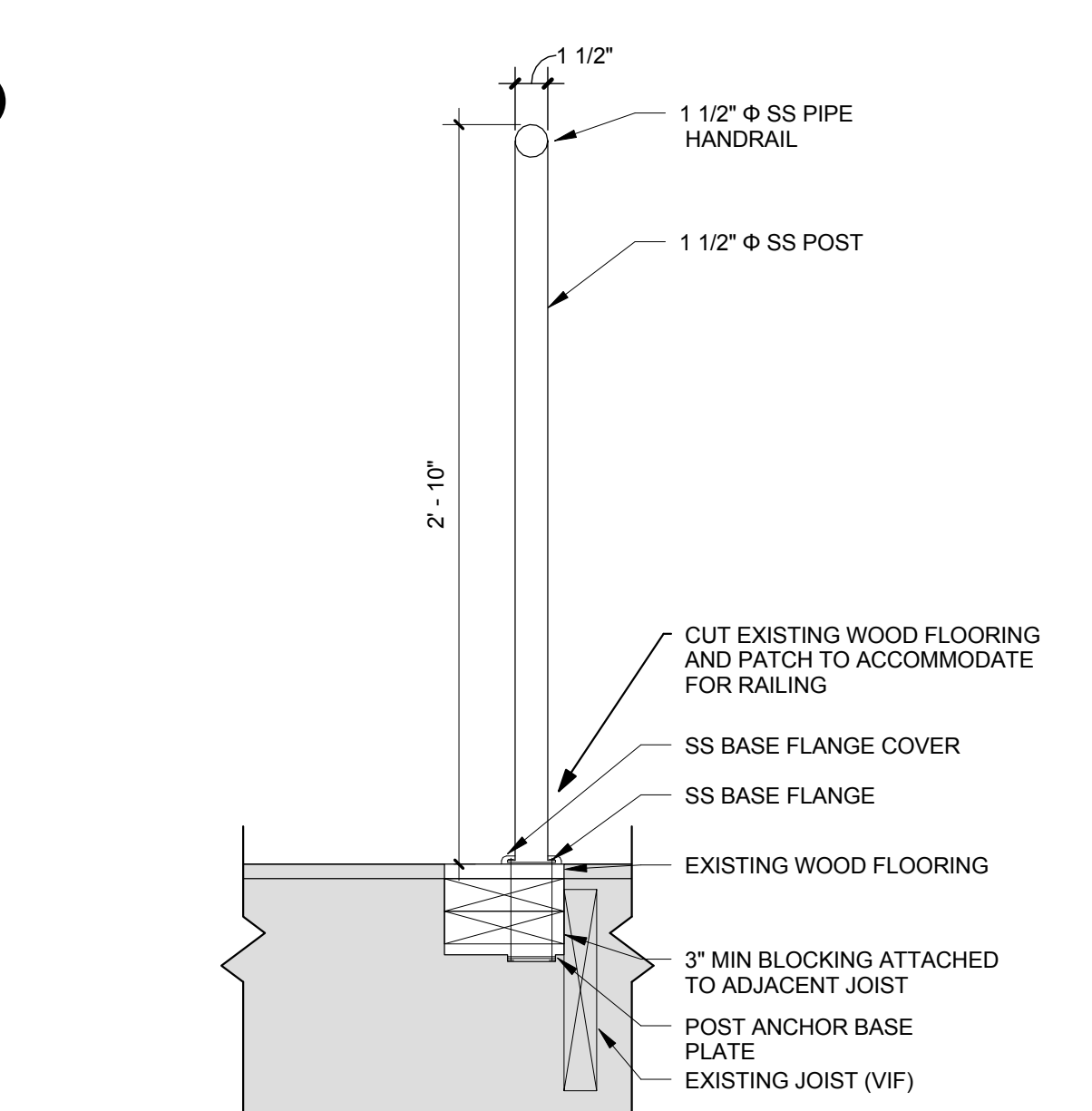
8 HANDRAIL ELEVATION AT AISLE
SCALE: 1/2" = 1'-0"



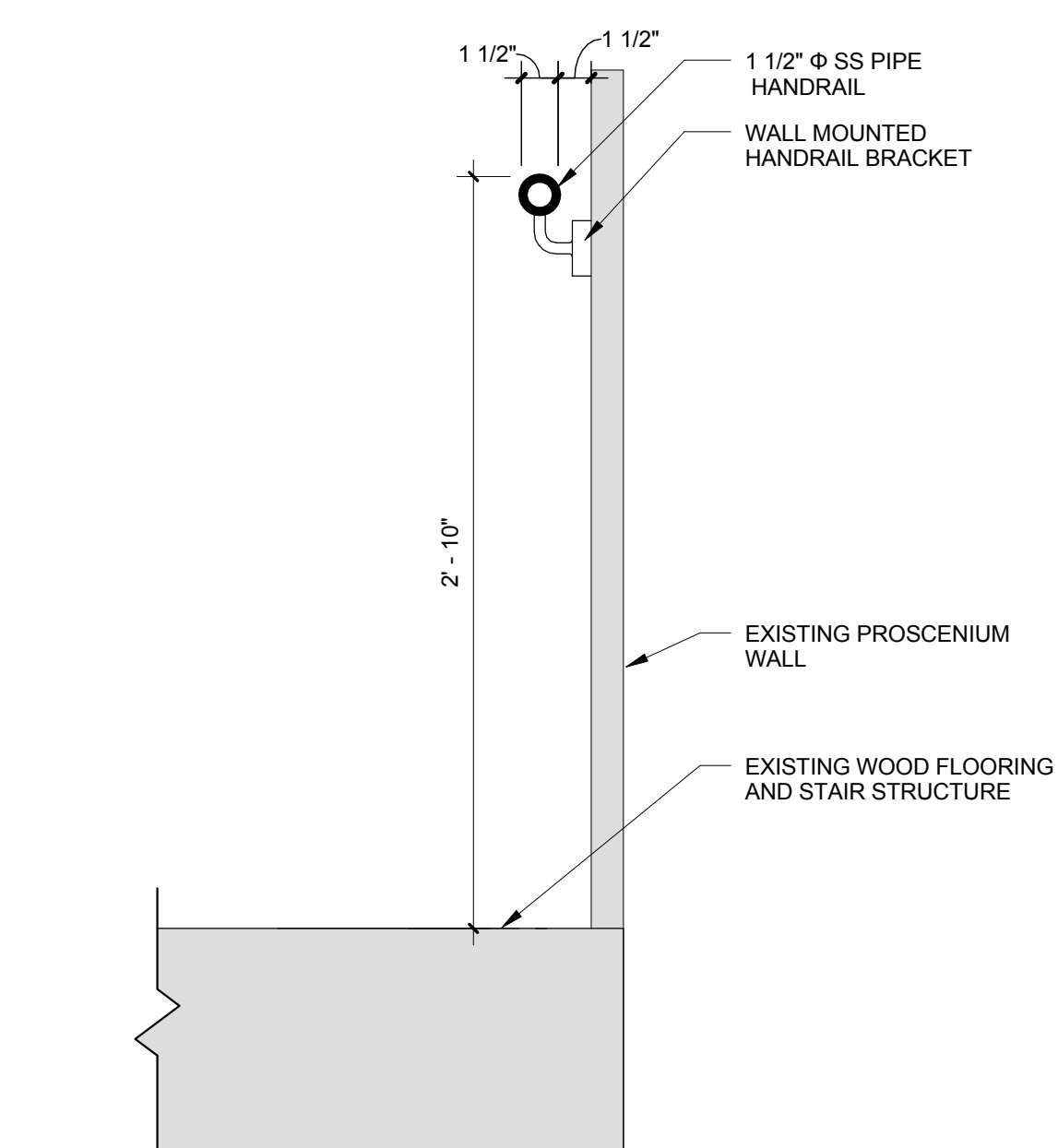
9 HANDRAIL MOUNTING AND STEP DETAIL AT AISLE
SCALE: 1 1/2" = 1'-0"



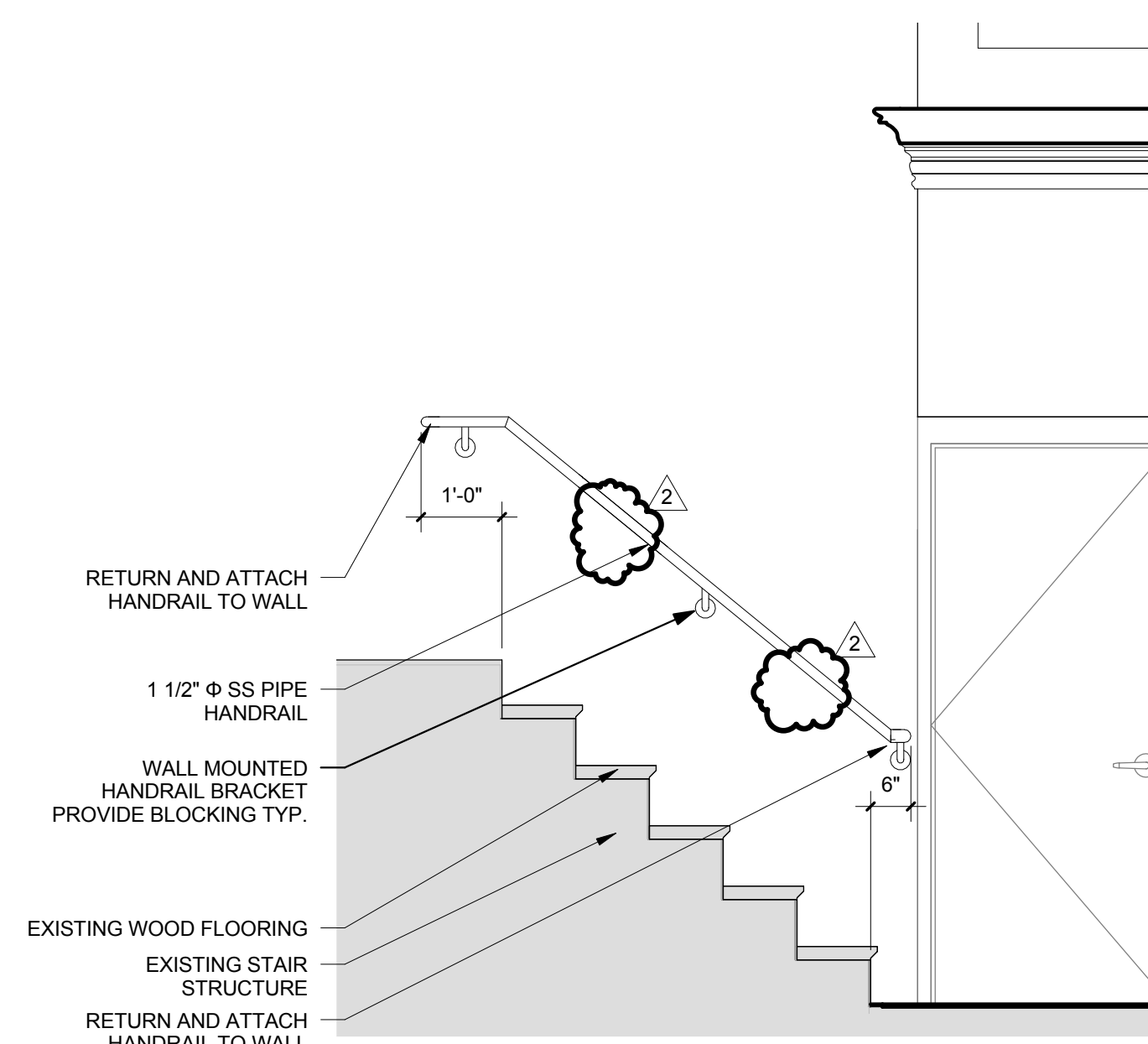
10 HANDRAIL ELEVATION AT STAGE RIGHT
SCALE: 1/2" = 1'-0"



11 RAILING DETAIL AT STAGE RIGHT
SCALE: 1 1/2" = 1'-0"



12 HANDRAIL DETAIL AT STAGE LEFT
SCALE: 1 1/2" = 1'-0"



13 HANDRAIL ELEVATION AT STAGE LEFT
SCALE: 1/2" = 1'-0"

REVISIONS		
Number	Description	Date
2	Revision No. 2	03-24-2014

ISSUED FOR BID



Repairs to Somerville
High School
Auditorium, Kitchen
and Cafeteria

81 Highland Avenue,
Somerville, MA 02143

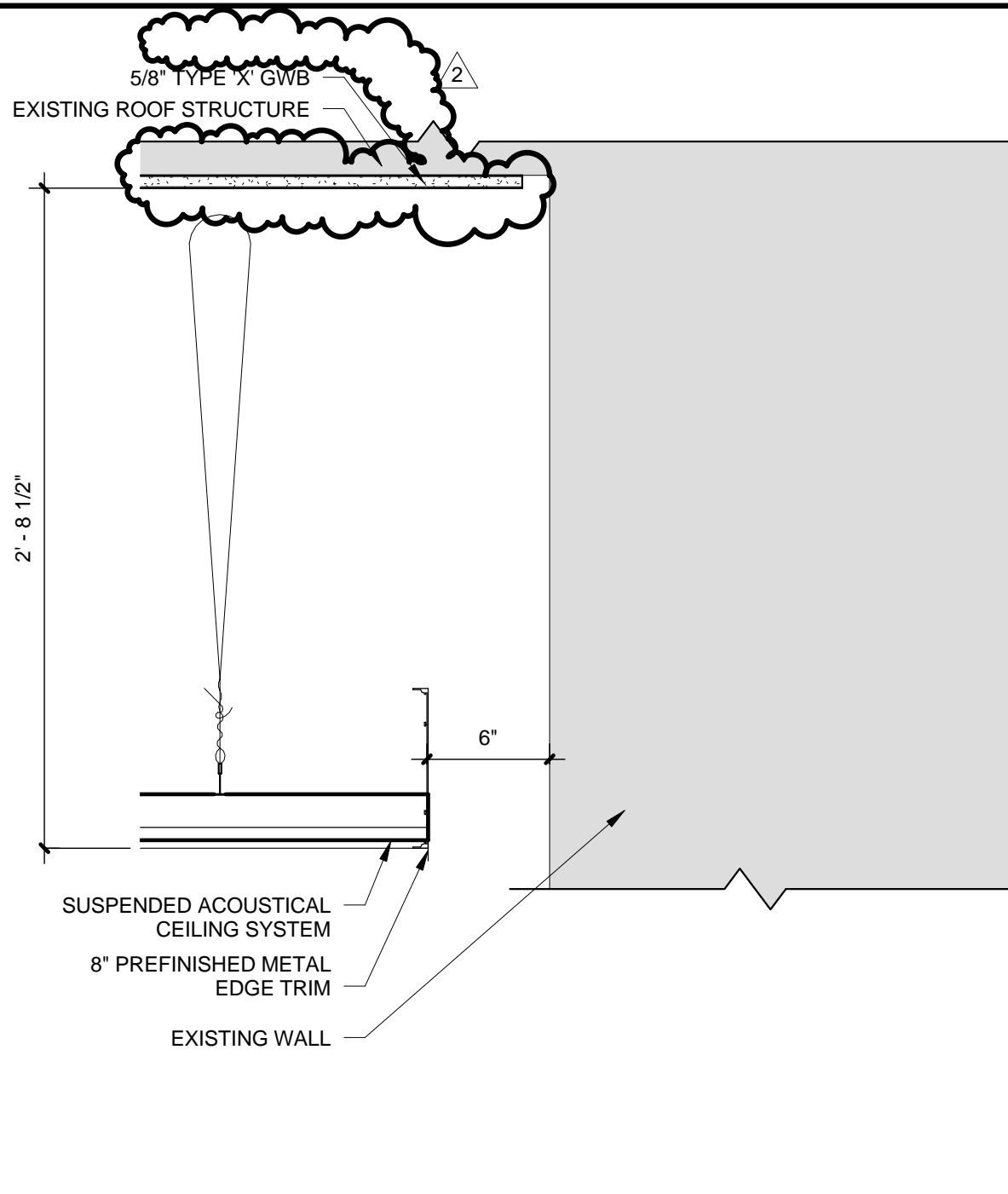
STAIR AND
RAILING
DETAILS

PROJECT NUMBER: 19431.01
DESIGNED BY: FC
DRAWN BY: EKM
CHECKED BY: FC
DATE: March 03, 2014
SCALE: As indicated

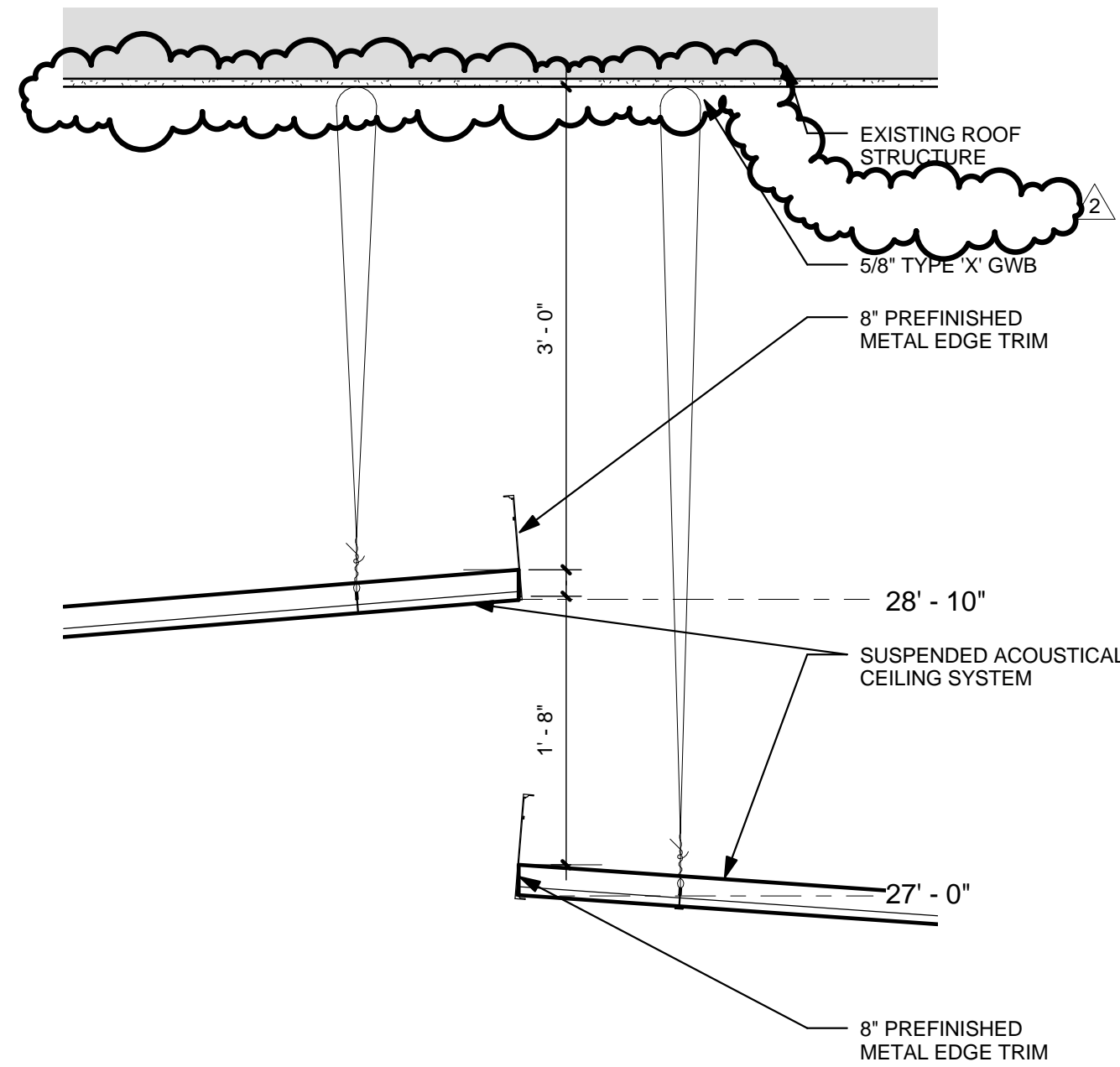
SHEET NUMBER:

A401

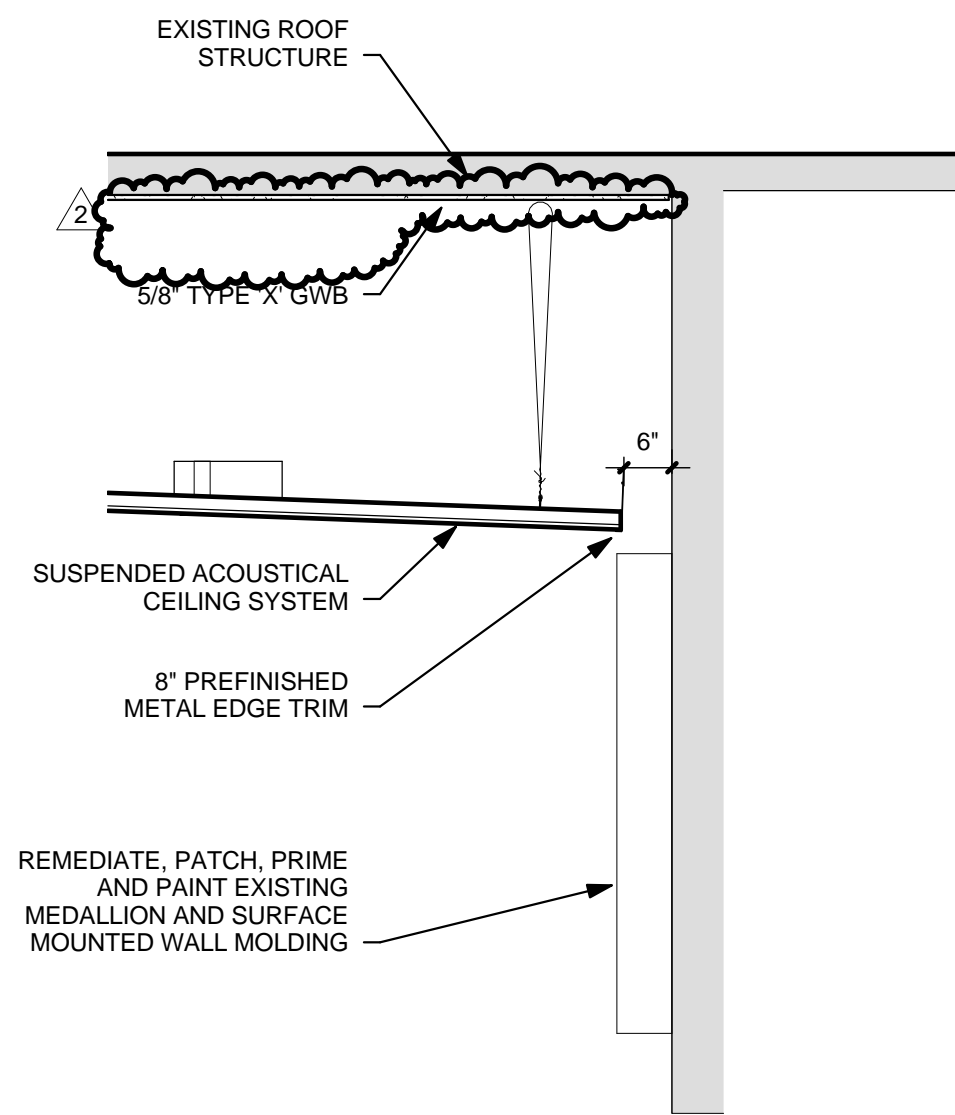
PROJECT FILE: C:\Users\A511\Documents\19431-Somerville HS Study Repairs_Electrical
PLOTTED: 3/24/2014 10:33:33 AM
REVIEWED BY: CIVIL: ARCH: STRUC: PLUM: FIRE: MECH: ELEC:



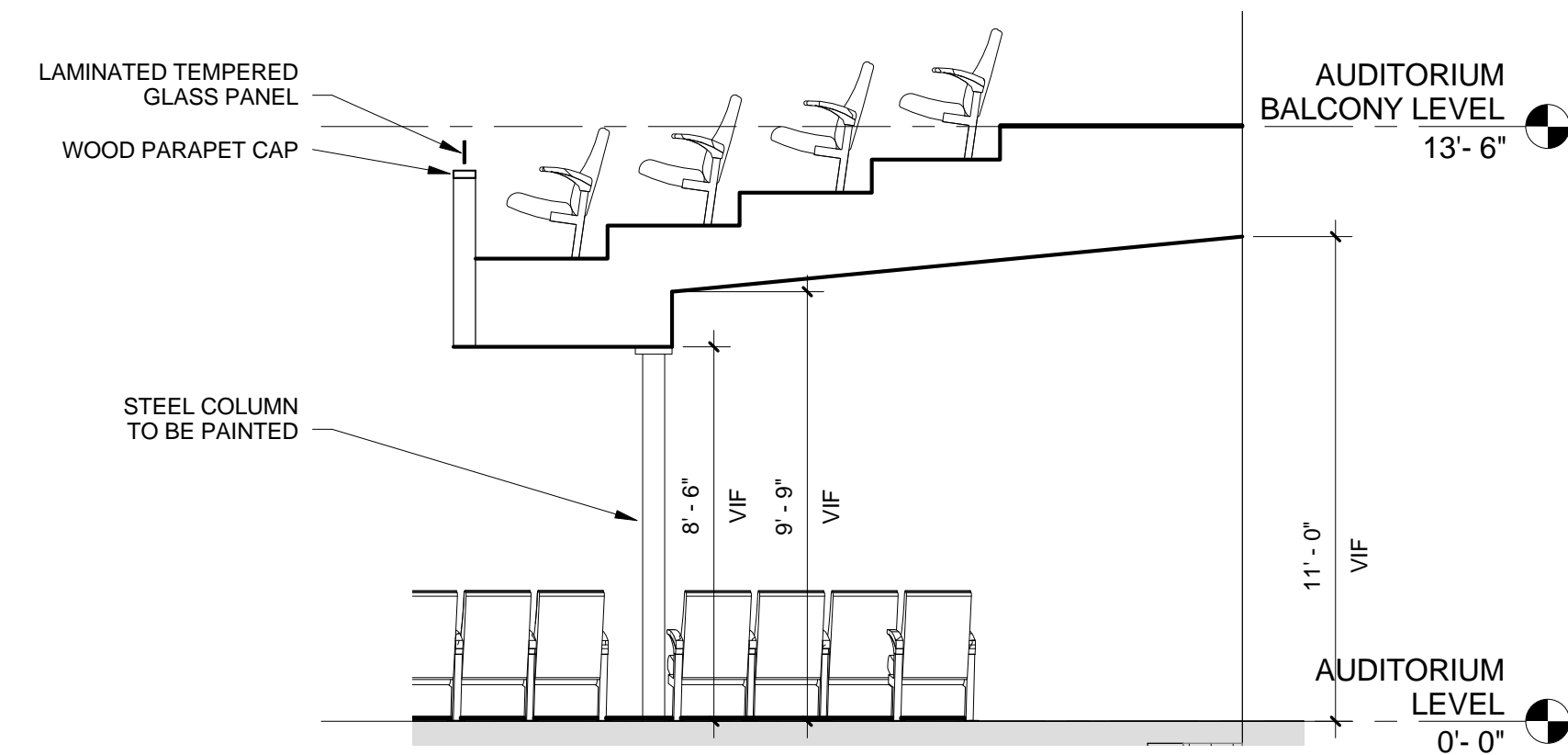
1 CEILING COVE DETAIL AT WALL
SCALE: 1 1/2" = 1'-0"



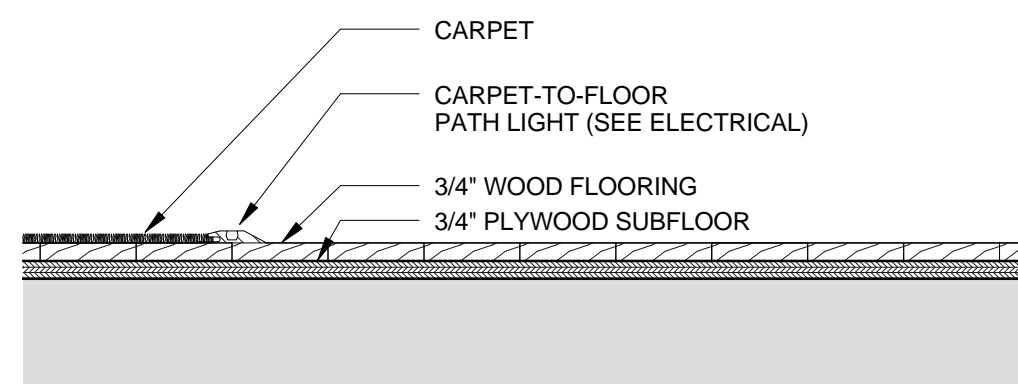
2 CEILING HEIGHT TRANSITION DETAIL
SCALE: 1" = 1'-0"



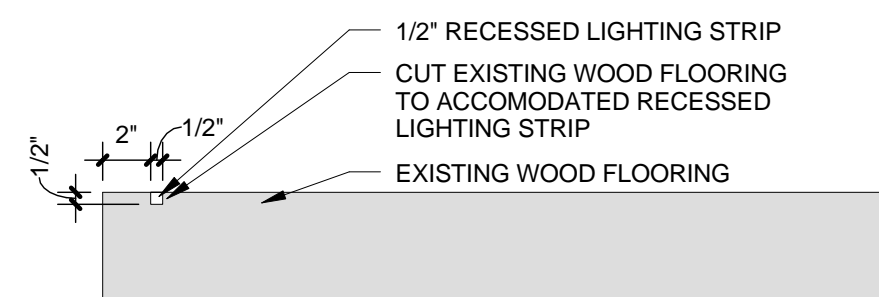
3 PROSCENIUM/CEILING SECTION
SCALE: 1/2" = 1'-0"



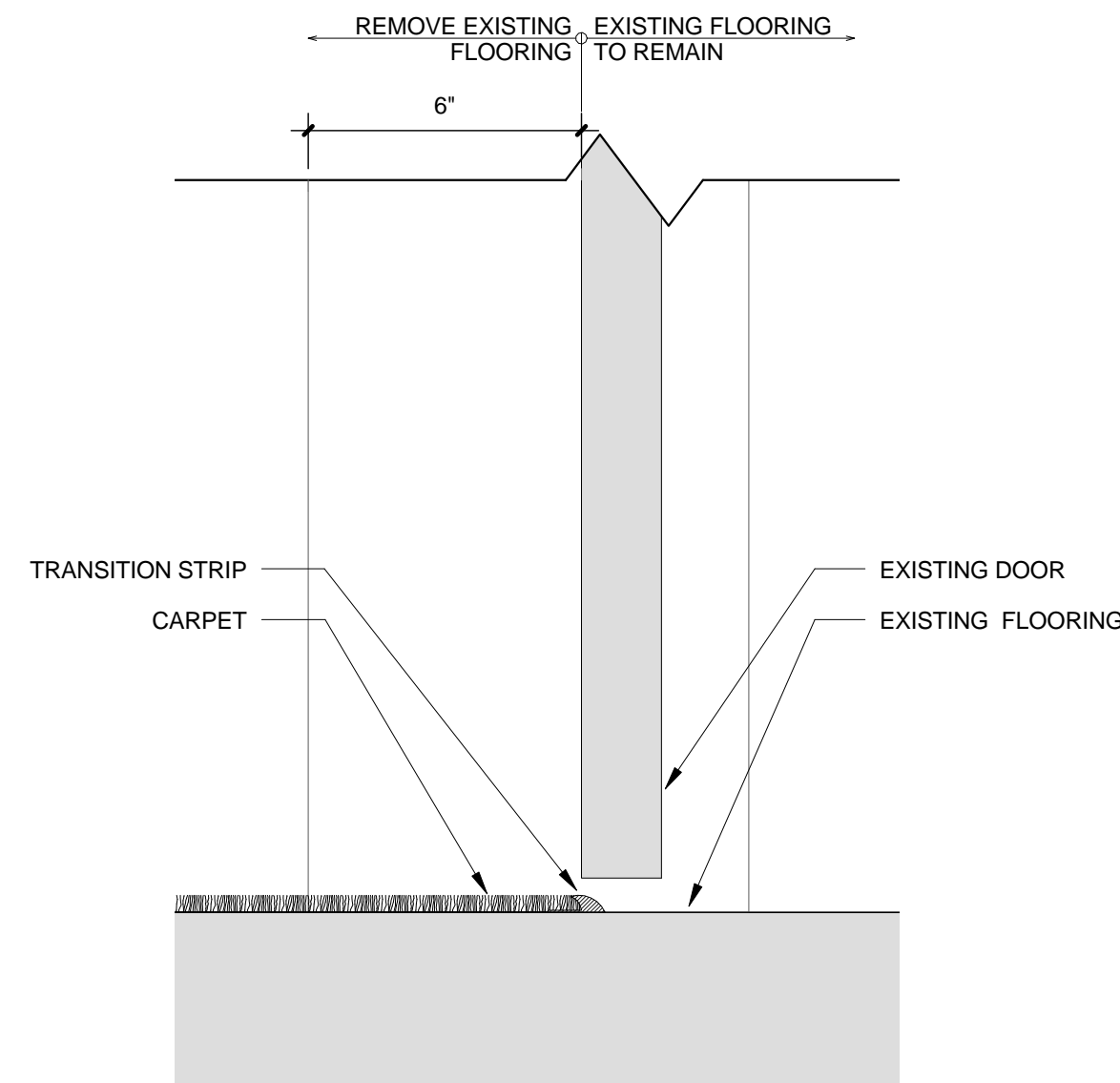
4 BALCONY SOFFIT SECTION
SCALE: 1/4" = 1'-0"



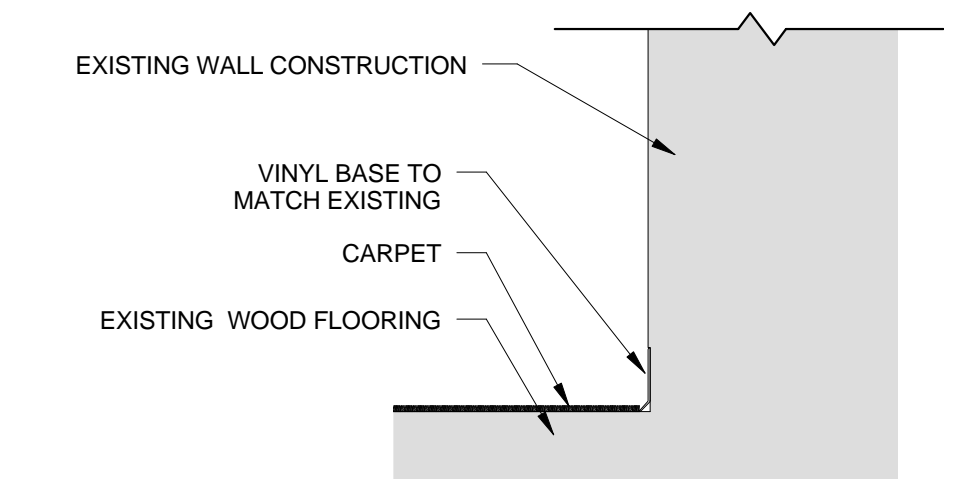
5 FLOOR TRANSITION AT AISLE SEATING
SCALE: 1 1/2" = 1'-0"



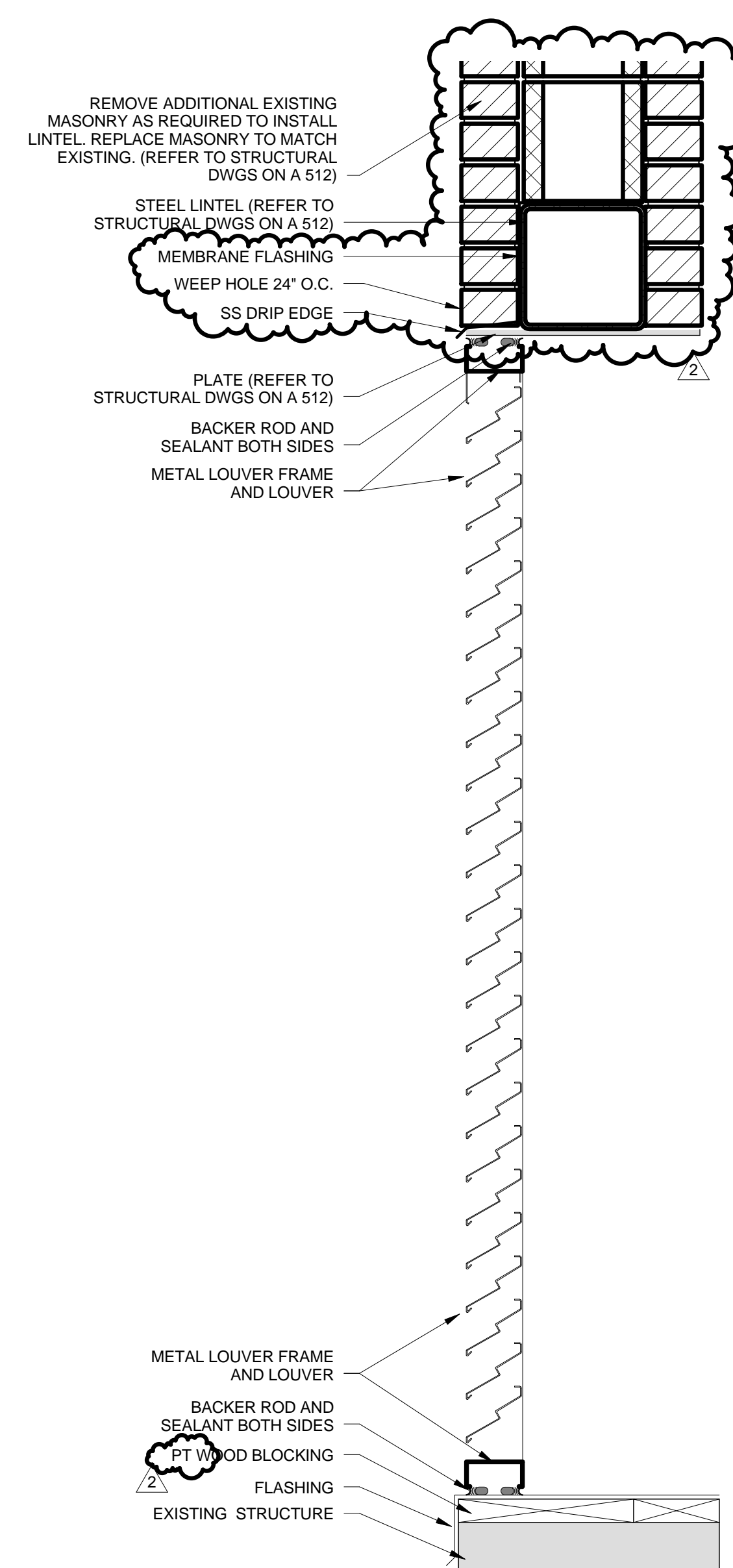
6 RECESSED LIGHTING AT BALCONY STAIR
SCALE: 1 1/2" = 1'-0"



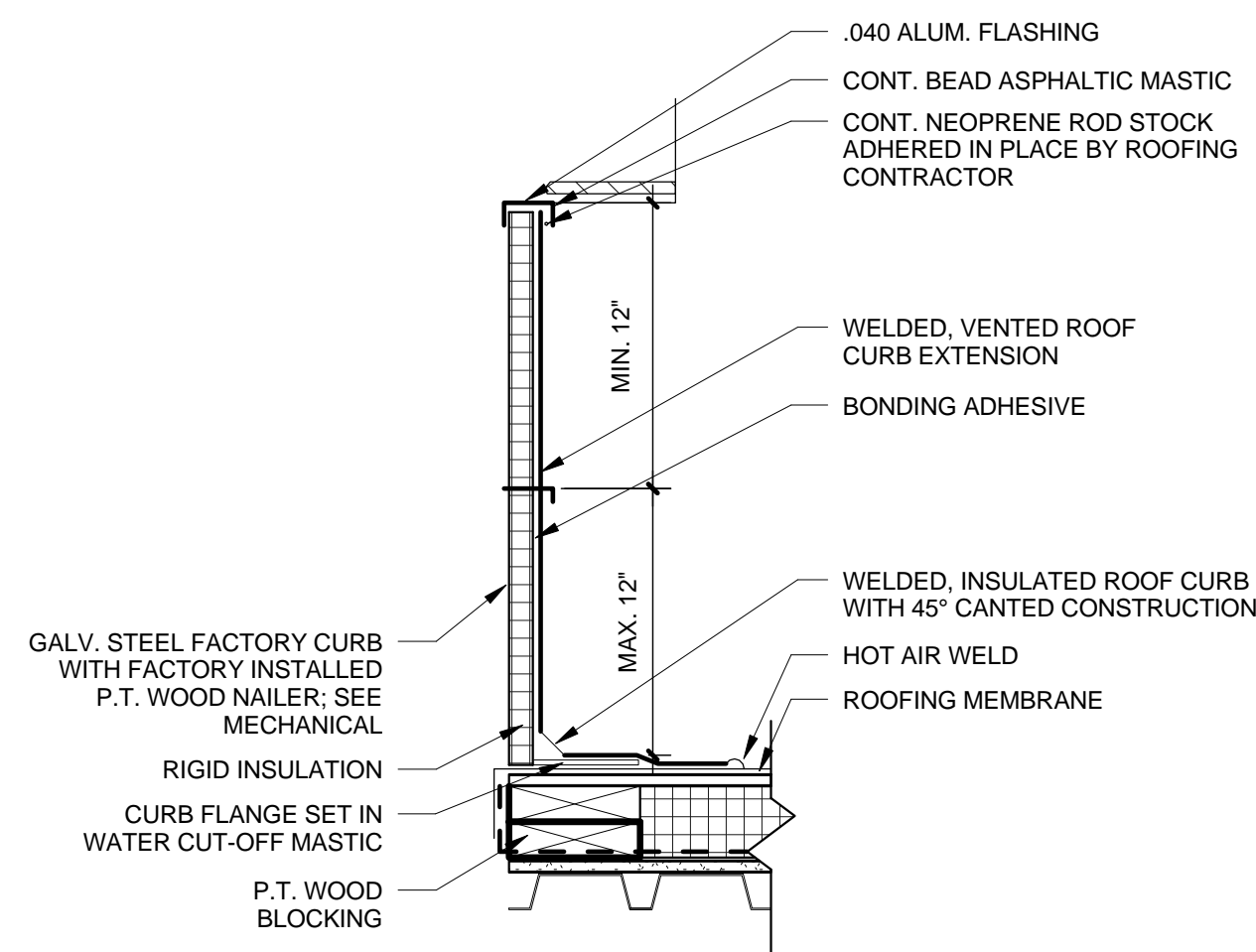
7 FLOOR TRANSITION AT DOOR
SCALE: 3" = 1'-0"



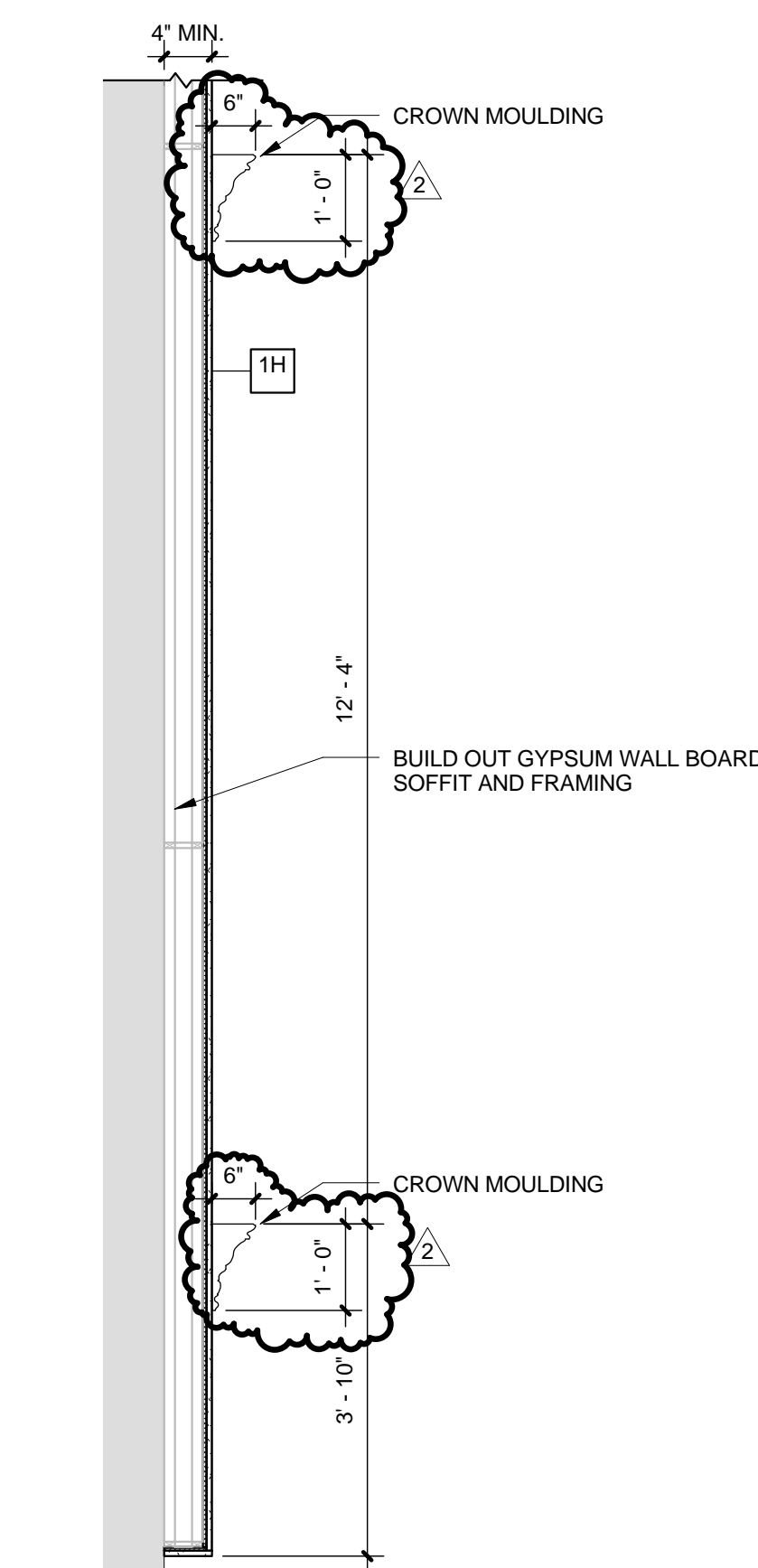
8 AUDITORIUM FLOOR TO WALL TRANSITION
SCALE: 1" = 1'-0"



9 SURFACE MOUNTED FIRE EXTINGUISHER DETAIL
SCALE: 3/4" = 1'-0"



10 ROOF MOUNTED KITCHEN EXHAUST FAN CURB
SCALE: 1 1/2" = 1'-0"



11 FRONT STAGE SOFFIT DETAIL
SCALE: 1/2" = 1'-0"

12 MECHANICAL ROOM LOUVER
SCALE: 1 1/2" = 1'-0"

REVISIONS		
Number	Description	Date
1	Revision No. 1	03-14-2014
2	Revision No. 2	03-24-2014

ISSUED FOR BID



Repairs to Somerville
High School
Auditorium, Kitchen
and Cafeteria

81 Highland Avenue,
Somerville, MA 02143

INTERIOR
DETAILS

PROJECT NUMBER: 19431.01

DESIGNED BY: FC

DRAWN BY: EKM

CHECKED BY: FC

DATE: March 03, 2014

SCALE: As indicated

SHEET NUMBER:

A511